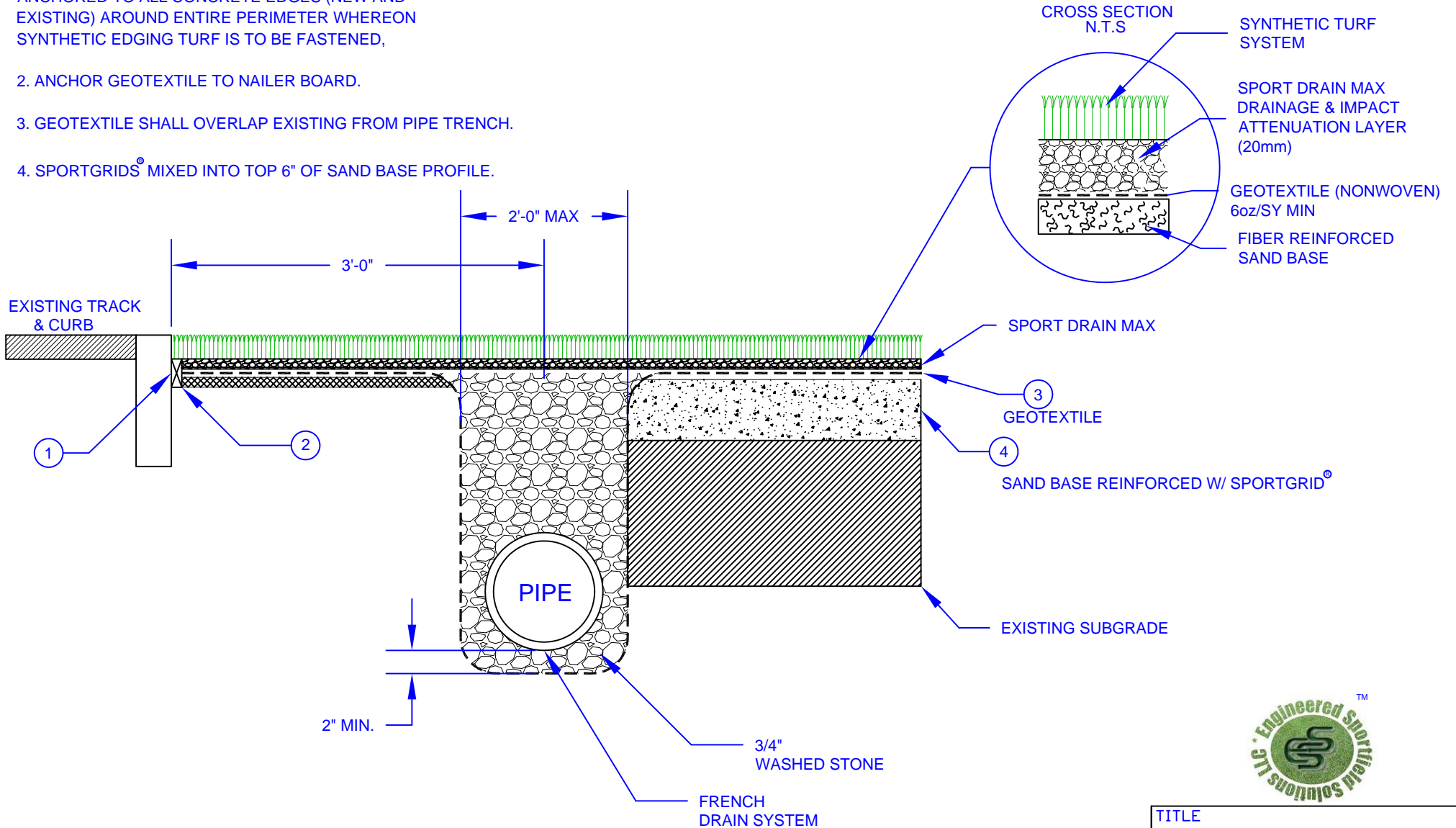


# NOTES INDICATED BY NUMBER

1. NAILER BOARD 2 X 4 PRESSURE TREATED LUMBER ANCHORED TO ALL CONCRETE EDGES (NEW AND EXISTING) AROUND ENTIRE PERIMETER WHEREON SYNTHETIC EDGING TURF IS TO BE FASTENED,
2. ANCHOR GEOTEXTILE TO NAILER BOARD.
3. GEOTEXTILE SHALL OVERLAP EXISTING FROM PIPE TRENCH.
4. SPORTGRIDS<sup>®</sup> MIXED INTO TOP 6" OF SAND BASE PROFILE.



**TYPICAL FIELD SECTION  
N.T.S.**



TITLE			
REINFORCED SAND BASED FIELD TYPICAL DETAIL			
DRAWN	CHK'D	APP'D	RELEASE
GRS			—
DATE	DATE	DATE	
1/1/09			
SIZE			SHEET
A			1 OF 1

All trademarks, service marks and logos displayed are registered or unregistered trademarks of Engineered Sportfield Solutions. These trademarks may not be used without written consent. Any unauthorized use of any trademarks, service marks, or logos may be a violation trademark laws.